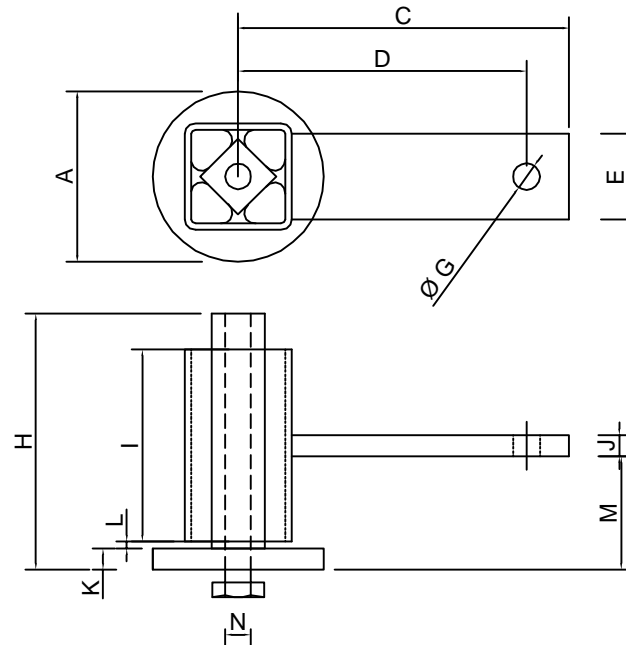


# B D TENSIONERS "CL" MODEL

## TECHNICAL DATA



MODEL	A	C	D	E	G	H	I	J	K	L	M	N
BD-TSCL	40	92.5	80.5	20	8.5	60	40	5	8	2	27.5	M10/8
BD-T1CL	60	120	105	25	10.5	80	55	10	10	3	35.5	M12/10
BD-T2CL	76	155	135	40	12.5	120	90	10	10	3	53	M16/12
BD-T3CL	100	232.5	207.5	50	20.5	150	110	12	12	5	63	M20/16
BD-TLCL	100	272.5	247.5	50	20.5	225	180	12	12	5	99	M20/16

MODEL	KG- MAX	R-max MM	Average Working Load	Shipping Weight
BD-TSCL	16	35-0-35	0-10kg	0.3kg
BD-T1CL	35	50-0-50	10-15kg	0.83kg
BD-T2CL	80	60-0-60	10-30kg	1.75kg
BD-T3CL	140	85-0-85	30-55kg	3.4kg
BD-TLCL	250	105-0-105	55-100kg	6.7kg

Matching Rollers
BD-RS
BD-R1
BD-R2
BD-R3
BD-RL

R-max = Maximum Arm Travel

KG = Kilograms at R