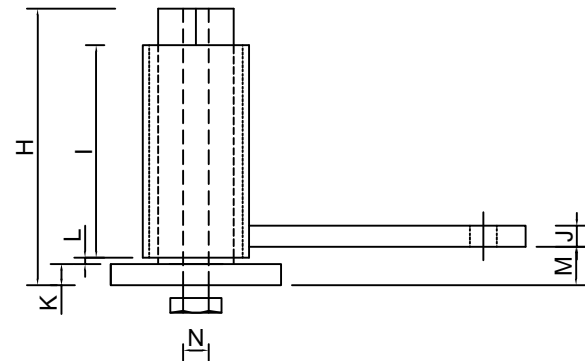
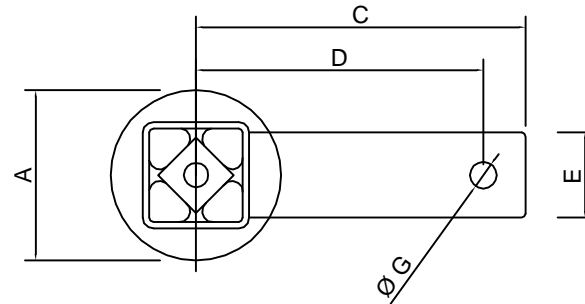


# B D TENSIONERS "R-R" MODEL

## TECHNICAL DATA



MODEL	A	C	D	E	G	H	I	J	K	L	M	N
BD-TSRR	40	92.5	80.5	20	8.5	68	50	5	8	2	15	M10/8
BD-T1RR	60	120	105	25	10.5	98	72	10	10	3	18	M12/10
BD-T2RR	76	155	135	40	12.5	128	100	10	10	3	18	M16/12
BD-T3RR	100	232.5	207.5	50	20.5	167	130	12	12	5	22	M20/16
BD-TLRR	100	272.5	247.5	50	20.5	237	200	12	12	5	22	M20/16

MODEL	KG- MAX	R-max MM	Average Working Load	Shipping Weight
BD-TSRR	16	35-0-35	0-10kg	0.3kg
BD-T1RR	35	50-0-50	10-15kg	0.83kg
BD-T2RR	80	60-0-60	10-30kg	1.75kg
BD-T3RR	140	85-0-85	30-55kg	3.4kg
BD-TLRR	250	105-0-105	55-100kg	6.7kg

Matching Rollers
BD-RS
BD-R1
BD-R2
BD-R3
BD-RL

R-max = Maximum Arm Travel

KG = Kilograms at R