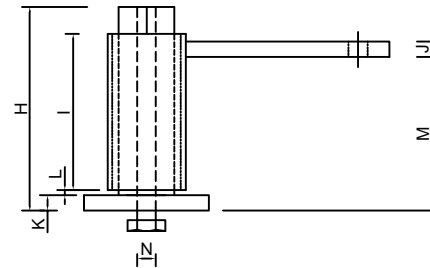
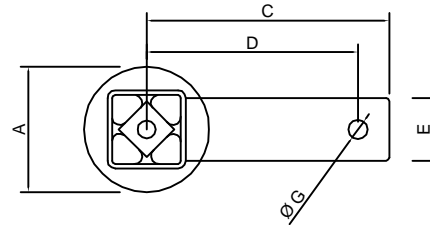


B D TENSIONERS "R" MODEL

TECHNICAL DATA



MODEL	A	C	D	E	G	H	I	J	K	L	M	N
BDTMR-11	30	91	79	20	8.5	52	41	5	6	4	46	M6/5
BD-TSR	40	92.5	80.5	20	8.5	68	50	5	8	2	50	M10/8
BD-T1R	60	120	105	25	10.5	98	72	10	10	3	75	M12/10
BD-T2R	76	155	135	40	12.5	128	100	10	10	3	98	M16/12
BD-T3R	100	232.5	207.5	50	20.5	167	130	12	12	5	130	M20/16
BD-TLR	100	272.5	247.5	50	20.5	237	200	12	12	5	200	M20/16

MODEL	KG- MAX	R-max MM	Average Working Load	Shipping Weight	Matching Rollers
BDTMR-11	12	30-0-30	0-8kg	0.2kg	BD-RS
BDTSR	16	35-0-35	0-10kg	0.3kg	BD-RS
BDT1R	35	50-0-50	10-15kg	0.83kg	BD-R1
BDT2R	80	60-0-60	10-30kg	1.75kg	BD-R2
BDT3R	140	85-0-85	30-55kg	3.4kg	BD-R3
BDTLR	250	105-0-105	55-100kg	6.7kg	BD-RL

R-max = Maximum Arm Travel

KG = Kilograms at R